



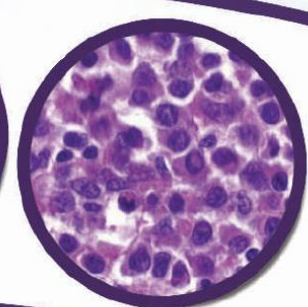
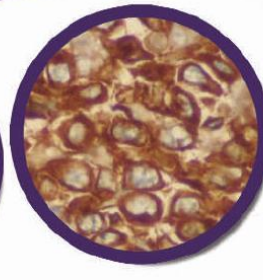
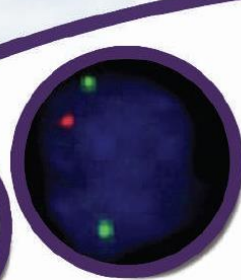
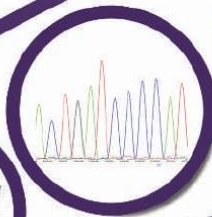
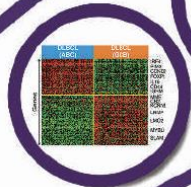
EUROPEAN ASSOCIATION
FOR HAEMATOLOGY

“UPDATES IN WHO LYMPHOMA CLASSIFICATION: 2008-2016” PRACTICAL DIAGNOSTIC APPROACH WITH CLINICAL ASPECTS

COURSE ORGANIZED BY:

**TURKISH DIVISION OF THE INTERNATIONAL ACADEMY OF PATHOLOGY (IAP)
& EUROPEAN ASSOCIATION FOR HAEMATOPATHOLOGY (EAHP)**

SPONSORSHIP BOOKLET



April 16-17, 2016 Istanbul / Turkey

www.iapistanbul2016.org

**“UPDATES IN WHO LYMPHOMA
CLASSIFICATION: 2008-2016”
PRACTICAL DIAGNOSTIC APPROACH
WITH CLINICAL ASPECTS**

COURSE ORGANIZED BY:
TURKISH DIVISION OF THE INTERNATIONAL ACADEMY OF PATHOLOGY (IAP)
& EUROPEAN ASSOCIATION FOR HAEMATOPATHOLOGY (EAHP)



EUROPEAN ASSOCIATION
FOR HAEMATOPATHOLOGY

April 16-17, 2016 Istanbul / Turkey

Welcome Message

We are delighted to invite you to the third educational activity of the IAP Turkish Division. Our third course is organized in collaboration with the European Association of Haematopathology (EAHP). This collaboration between the two organisations is formed because of their common interest to provide continuous medical education. Following the 17th Meeting of the EAHP in Istanbul on Small B cell lymphomas, we planned to review the forthcoming update of the WHO lymphoma classification. This course will focus on the recent advances in understanding the biology of lymphomas and the new diagnostic approaches guiding the targeted therapies. The scientific program is organised as lectures summarising the advances in lymphoma entities and case discussions demonstrating the pitfalls in diagnosis. The case discussion sessions will also include the clinical aspects and the new therapeutic approaches in treatment. The distinguished lecturers of the course are authors of several important references in lymphoma research. They are also members of the EAHP executive committee.

We will have a busy and full two days program over the weekend. Since the scientific program and the attractive topic will not leave time for social activities, we would encourage you to try to extend your stay and explore some of the spectacular parts of the unique city of Istanbul. There will be city tours organised for the participants who will opt to extend their stay. We hope you will also enjoy the beauties of this unique city located at the intersection between the two continents.

The course venue is the WOW convention centre located very close to the Istanbul Ataturk Airport and also easily reached by public transportation for those participants staying in different parts of the city. We will be very pleased to welcome pathologists from Turkey and neighboring countries, just as in our previous IAP meetings.

We hope that you will have a memorable and fruitful weekend discussing the various aspects of lymphoma diagnosis and treatment.



Andrew Wotherspoon
President of the EAHP



İlhan Tuncer
President of the IAP Turkish Division

www.iapistambul2016.org

**“UPDATES IN WHO LYMPHOMA
CLASSIFICATION: 2008-2016”
PRACTICAL DIAGNOSTIC APPROACH
WITH CLINICAL ASPECTS**

**COURSE ORGANIZED BY:
TURKISH DIVISION OF THE INTERNATIONAL ACADEMY OF PATHOLOGY (IAP)
& EUROPEAN ASSOCIATION FOR HAEMATOPATHOLOGY (EAHP)**



April 16–17, 2016 Istanbul / Turkey

Correspondence

IAP 2016 Lymphoma Course Scientific Secretariat

Prof. Isinsu KUZU

University of Ankara, School of Medicine
Department of Pathology, Morphology Building Level 1
06100 Ankara, Turkey
Phone: +90 312 595 81 24 / + 90 312 595 80 69
E-mail: isinsukuzu@yahoo.com

IAP 2016 Lymphoma Course Organizing Secretariat



Turan Gunes Bulvari 5. Cadde No: 13
06550 Yildiz, Çankaya, Ankara, Turkey
Phone: +90 312 440 50 11
Fax: +90 312 441 45 62
E-mail: info@iapistanbul2016.org



www.iapistanbul2016.org

**"UPDATES IN WHO LYMPHOMA
CLASSIFICATION: 2008-2016"
PRACTICAL DIAGNOSTIC APPROACH
WITH CLINICAL ASPECTS**

COURSE ORGANIZED BY:
TURKISH DIVISION OF THE INTERNATIONAL ACADEMY OF PATHOLOGY (IAP)
& EUROPEAN ASSOCIATION FOR HAEMATOPATHOLOGY (EAHP)



EUROPEAN ASSOCIATION
FOR HAEMATOPATHOLOGY

April 16-17, 2016 Istanbul / Turkey

Organizing Committee

Ilhan Tuncer

IAP Turkish Division President

Sitki Tuzlali

IAP Turkish Division Secretary

Isinsu Kuzu

IAP Turkish Division Treasurer & EAHP EXCO Member

Dilek Yilmazbayhan

PDF President

Aysegul Uner

PDF Haematopathology Study Group Chief

International Scientific Faculty

Andrew Wotherspoon

EAHP President (2012-2016)

German Ott

EAHP President (2016-2018)

Leticia Quintanilla Martinez,

EAHP Secretary

Daphne de Jong

EAHP Treasurer

Isinsu Kuzu

IAP Turkish Division Treasurer & EAHP EXCO Member

Aysegul Uner

PDF Haematopathology Study Group Chief

Important Dates

Deadline for Early Registration : March 14, 2016

Deadline for Cancellation of Registration : March 14, 2016

Deadline for Cancellation of Hotel Booking : February 26, 2016

If received by February 26, 2016, the payment will be refunded in full,

If received between February 26, 2016 and March 16, 2016 50 % of the fee will be refunded.

If received later than March 16, 2016 there will be no refund.

www.iapistambul2016.org

**"UPDATES IN WHO LYMPHOMA
CLASSIFICATION: 2008-2016"
PRACTICAL DIAGNOSTIC APPROACH
WITH CLINICAL ASPECTS**

COURSE ORGANIZED BY:
TURKISH DIVISION OF THE INTERNATIONAL ACADEMY OF PATHOLOGY (IAP)
& EUROPEAN ASSOCIATION FOR HAEMATOPATHOLOGY (EAHP)



April 16-17, 2016 Istanbul / Turkey

Main Topics

Target Audience

The scientific program design is mainly for hematopathologists and surgical pathologists interested in lymphoma diagnosis. The diagnostic approach and new prognostic or targeted therapy related factors for the entities will be discussed with representative cases. Clinicians treating lymphomas could also be interested.

The Aim

- 1- To focus on the recent advances on lymphomas with special emphasis on differential diagnosis.
- 2- To discuss the impact of the new classification on the clinical and therapeutic aspects of the entities.

SESSION 1 : Small B Cell Lymphomas

Updates in CLL, Follicular Lymphoma (FL), Mantle Cell Lymphoma (MCL), Hairy Cell Leukemia, Lymphoplasmacytic Lymphoma (LPL), Marginal Zone Lymphoma (MZL).

SESSION 2 : Aggressive B Cells Lymphomas

Updates in Diffuse Large B Cell Lymphoma (DLBCL), Burkitt Lymphoma (BL), B Cell Lymphoma Unclassified (BCLU): Double Hit & Double Expressor Lymphomas, EBV Related Lymphomas: EBV (+) LBCL.

SESSION 3 : T Cell Lymphomas

Updates in Follicular T Helper Cell Originated Lymphomas (AITCL), Peripheral T Cell Lymphoma (PTCL), Intestinal T/NK Cell Neoplasms (EATCL), CD30 Positive T Cell Lymphomas, Large Granular Lymphocytic (T- LGL).

SESSION 4: Hodgkin's Lymphomas

Nodular LP Hodgkin Lymphoma, Classical Hodgkin Lymphomas. Gray Zone Lymphoma



www.iapistanbul2016.org

**"UPDATES IN WHO LYMPHOMA
CLASSIFICATION: 2008-2016"
PRACTICAL DIAGNOSTIC APPROACH
WITH CLINICAL ASPECTS**

COURSE ORGANIZED BY:
TURKISH DIVISION OF THE INTERNATIONAL ACADEMY OF PATHOLOGY (IAP)
& EUROPEAN ASSOCIATION FOR HAEMATOPATHOLOGY (EAHP)



April 16-17, 2016 Istanbul / Turkey

Scientific Program

April 16, 2016 Saturday

08:00-08:45	REGISTRATION
08:45-09:00	Opening General Aspects of WHO Lymphoma Updates Story
SESSION 1	SMALL B CELL LYMPHOMAS
09:00-09:40	LECTURE: Updates in Small B cell lymphomas <i>Andrew Wotherspoon</i>
09:40-10:40	PANEL: Practical Approach in Differential Diagnosis with Interactive Discussion of Representative Cases. <i>Andrew Wotherspoon, German Ott, Leticia Quintanilla Martinez, Daphne de Jong</i>
10:40-11:00	Coffee Break
11:00-12:30	PANEL: Practical Approach in Differential Diagnosis with Interactive Discussion of Representative Cases. <i>Andrew Wotherspoon, German Ott, Leticia Quintanilla Martinez, Daphne de Jong</i>
12:30-14:00	Lunch Break
SESSION 2	AGGRESSIVE B CELL LYMPHOMAS
14:00-14:40	LECTURE: New molecular and immunophenotypic markers algorithms used for differential diagnosis. New molecular and immunophenotypic markers algorithms used for differential diagnosis of aggressive B cell lymphomas <i>German Ott</i>
14:40-15:40	PANEL: Practical Approach in Differential Diagnosis with Interactive Discussion of Representative Cases. <i>Andrew Wotherspoon, German Ott, Leticia Quintanilla Martinez, Daphne de Jong</i>
15:40-16:00	Coffee Break
16:00-17:00	PANEL: Practical Approach in Differential Diagnosis with Interactive Discussion of Representative Cases. <i>Andrew Wotherspoon, German Ott, Leticia Quintanilla Martinez, Daphne de Jong</i>

**"UPDATES IN WHO LYMPHOMA
CLASSIFICATION: 2008-2016"
PRACTICAL DIAGNOSTIC APPROACH
WITH CLINICAL ASPECTS**

**COURSE ORGANIZED BY:
TURKISH DIVISION OF THE INTERNATIONAL ACADEMY OF PATHOLOGY (IAP)
& EUROPEAN ASSOCIATION FOR HAEMATOPATHOLOGY (EAHP)**



April 16-17, 2016 Istanbul / Turkey

April 17, 2016 Sunday

SESSION 3 T CELL LYMPHOMAS

09:00-09:40 LECTURE: Updates on classification of T cell lymphoma entities.
Leticia Quintanilla Martinez

09:40-10:40 PANEL: Practical Approach in Differential Diagnosis with Interactive Discussion of Representative Cases.
Andrew Wotherspoon, German Ott, Leticia Quintanilla Martinez, Daphne de Jong

10:40-11:00 Coffee Break

11:00-12:30 PANEL: Practical Approach in Differential Diagnosis with Interactive Discussion of Representative Cases.
Andrew Wotherspoon, German Ott, Leticia Quintanilla Martinez, Daphne de Jong

12:30-14:00 Lunch Break

SESSION 4 HODGKIN'S LYMPHOMAS

14:00-14:40 LECTURE: Updates in Hodgkin's Lymphomas
Daphne de Jong

14:40-15:40 PANEL: Practical Approach in Differential Diagnosis with Interactive Discussion of Representative Cases.
Andrew Wotherspoon, German Ott, Leticia Quintanilla Martinez, Daphne de Jong

15:40-16:00 Coffee Break

16:00-17:00 PANEL: Practical Approach in Differential Diagnosis with Interactive Discussion of Representative Cases.
Andrew Wotherspoon, German Ott, Leticia Quintanilla Martinez, Daphne de Jong

17:00-17:30 Closing Remarks

**"UPDATES IN WHO LYMPHOMA
CLASSIFICATION: 2008-2016"
PRACTICAL DIAGNOSTIC APPROACH
WITH CLINICAL ASPECTS**

**COURSE ORGANIZED BY:
TURKISH DIVISION OF THE INTERNATIONAL ACADEMY OF PATHOLOGY (IAP)
& EUROPEAN ASSOCIATION FOR HAEMATOPATHOLOGY (EAHP)**



April 16-17, 2016 Istanbul / Turkey

Registration

Meeting Registration Fees in Euro (€)	Early Registration on or before March 14, 2016	Late & Onsite Registration After March 14, 2016
Physician	250 €	400 €
Student, Fellow*	150 €	200 €
Industry	350 €	

* Please attach a copy of an ID or relevant document.

Registration Fee Includes: Participation to scientific sessions, Access to exhibition area, USB Memory, Certificate of attendance, Two coffee breaks with cookies & Lunch with one soft drink on 16 and 17 April 2016. The 18% VAT is included to the prices.

Confirmation, Cancellations and Refunds:

- Please note that the registrations can only be accepted and confirmed upon receipt of the completed registration form and the full payment.
- Registration must be postmarked no later than March 14, 2016 to qualify for discounted fees.
- For the registration, 100 % of the fee will be refunded, only if written notice of cancellation is received by March 14, 2016.
- Cancellation received after this date will not be entitled to any refund.
- All refunds, if any, will be processed after the Meeting.



www.iapistambul2016.org